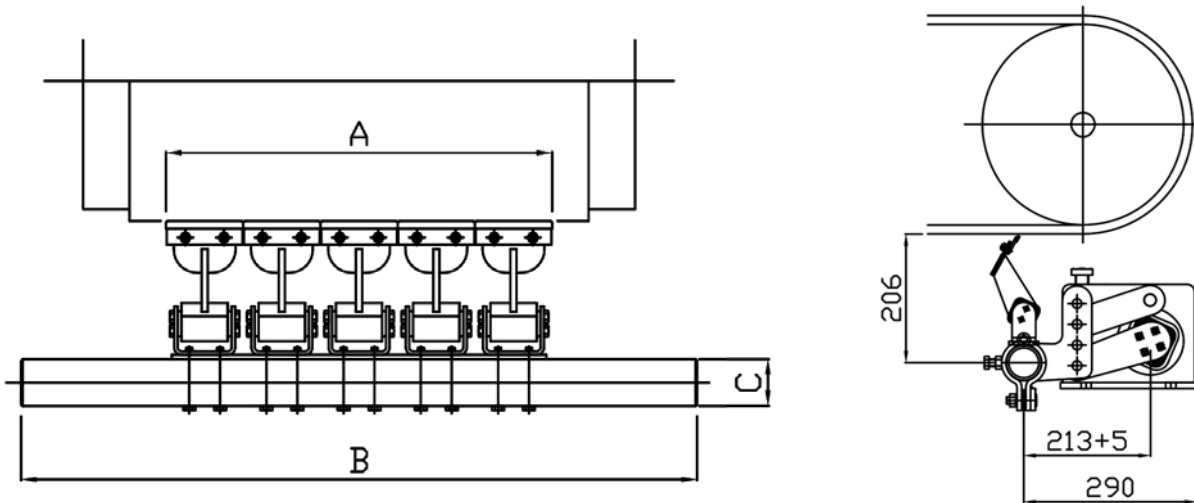


# LAUREC Belt Cleaner CP-S Type

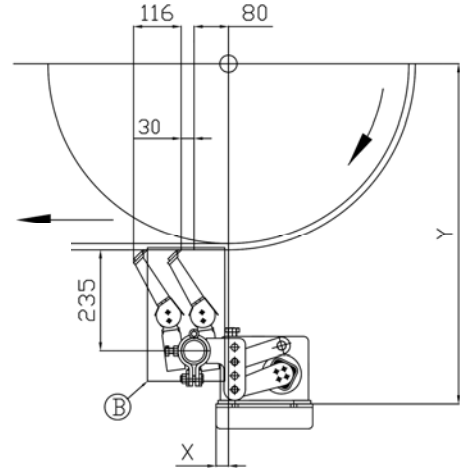
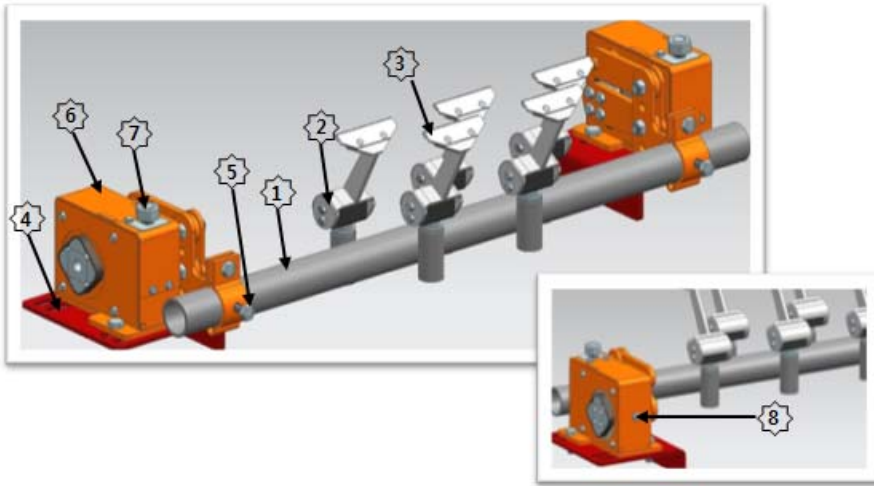


Model	Belt width	Tip Quantity	Frame Length	A	B	C	D
CP-S400	400	3	1220	302	187	∅ 60.5	137
CP-S500	500	4	1320	403	187	∅ 60.5	137
CP-S550	550	4	1420	403	187	∅ 60.5	137
CP-S600	600	5	1420	504	187	∅ 60.5	137
CP-S750	700	6	1620	605	187	∅ 60.5	137
CP-S800	800	6	1620	605	187	∅ 60.5	137
CP-S900	900	7	1720	706	187	∅ 60.5	137
CP-S1000	1000	8	1820	807	187	∅ 60.5	137
CP-S1050	1050	8	1820	807	213	∅ 60.5	143
CP-S1200	1200	10	2220	1009	213	∅ 60.5	143
CP-S1400	1400	12	2220	1211	213	∅ 60.5	143
CP-S1600	1600	14	2420	1413	213	∅ 76.3	143
CP-S1800	1800	15	2580	1514	213	∅ 76.3	143
CP-S2000	2000	17	2780	1716	213	∅ 76.3	143
CP-S2200	2200	19	2980	1918	213	∅ 76.3	143

※ The above standard drawing drawings because LAUTEC along the conveyor belt Pulley Diameter standard technical specifications are subject to change.

This drawing is confidential property of LAUTEC CO. and disclosure, reproduction and copy of all or part of the drawing without written consent of LAUTEC CO. is prohibited. All rights including patent and copyright are reserved.

# C,P-TYPE BELT CLEANER- Installation Manual



## Product Specifications

1. CP Cleaner Body High Pressure Pipe (STPG) that in the standard form referred to as melt-plated - ①
2. CP Cleaner Holder - ②
3. CP Cleaner carbide tips - ③
4. CP Cleaner Mounting Plate - ④
5. CP Cleaner Body mounting bolts - ⑤
6. CP Cleaner Pressure Devices - ⑥
7. CP Cleaner pressure adjustment bolt - ⑦
8. After adjusting the pressure mounting bolts - ⑧

This drawing is confidential property of LAUTEC CO. and disclosure, reproduction and copy of all or part of the drawing without written consent of LAUTEC CO. is prohibited. All rights including patent and copyright are reserved.

# INSTALLATION



1. In accordance with the installation drawings Pulley Center 4 (mounting plate) is installed X. Marking Y is the distance.
2. 1 (Cleaner Body) in accordance with the installation drawings Shute enough to fit wall OPEN (B) causes.
3. 4 (installation plate) Marking is welded to the left and right side Shute.
4. 1 (Cleaner Body) and Shute wall where the cut surface and slide the belt three times (tip), and then make a horizontal five times (fixed bolt) makes sure to tighten.
5. "Zeroing" – 7 (pressurized vault) return belt side and three times (Tip) of the front and back will be a match.
- 6 "Cleaner pressure" pressure on the side arrow to show a marked ↓ return if the grid scale pressure from the 2-3 is completed.
7. Pressure after the completion of eight times (pressure mounting bolts) to fix.
8. Cleaner efficient pressure drops should be pointed in the same way as before.